

ILLUSTRATIONS

OF THE

1426

FOREST FLORA OF NORTH-WEST AND CENTRAL INDIA.

COMMENCED BY THE LATE J. LINDSAY STEWART, M.D.

CONTINUED AND COMPLETED BY

DIETRICH BRANDIS, PHD.

DRAWN BY

WALTER FITCH, FLS.

Acc. no. B 19968

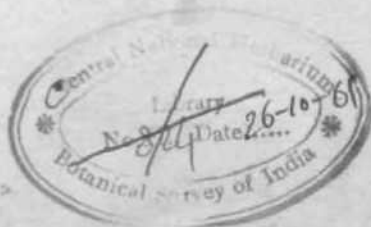
PUBLISHED UNDER THE AUTHORITY OF THE SECRETARY OF STATE FOR INDIA IN COUNCIL

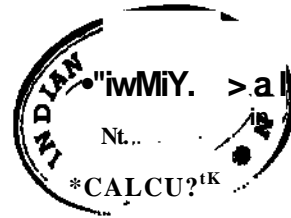
LONDON:

WM. H ALLEN & CO., 13 WATERLOO PLACE, S.W.

Publishers to the Indian Office

1874.





1426

ALPHABETICAL LIST OF PLATES.

	Plate	Page		Plate	Page
<i>Acacia leucophlaea</i> ,	27	184	<i>Myricaria germanica</i> ,	8	23
<i>Acer cesium</i> ,	21	111	<i>Olea cuspidata</i> ,	38	307
<i>Adina cordifolia</i> ,	33	263	<i>Ougeinia dalbergioides</i> ,	23	146
<i>^Esculus indica</i> ,	19	103	<i>Parrotia Jacquemontiana</i> ,	28	216
<i>Albizzia procera</i> ,	26	175	<i>Phyllanthus Emblica</i> ,	52	454
<i>Alnus nitida</i> ,	57	460	<i>Pinus Gerardiana</i> ,	67	508
<i>Bassia butyracea</i> ,	35	290	<i>Pistacia integerrima</i> ,	22	122
<i>Betula acuminata</i> ,	56	458	<i>Populus euphratica</i> ,	63	474
<i>Briedelia retusa</i> ,	55	449	<i>Prosopis spicigera</i> ,	25	169
<i>Capparis aphylla</i> ,	3	14	<i>Pterospermum acerifolium</i> ,	11	35
<i>Carpinus faginea</i> ,	66	492	<i>Putranjiva Eoxburghii</i> ,	53	451
<i>Casearia tomentosa</i> ,	31	243	<i>Quercus annulata</i> ,	65	487
<i>Cedrela Toona</i> ,	14	72	——— <i>semecarpifolia</i> ,	64	479
<i>Celtis australis</i> ,	50	428	<i>Reptonia buxifolia</i> ,	34	287
<i>Cordia Macleodii</i> ,	41	337	<i>Ehamnus purpureus</i> ,	18	91
<i>Cornus macrophylla</i> ,	32	252	<i>Salix babylonica</i> ,	59	465
<i>Dalbergia Sissoo</i> ,	24	149	——— <i>Caprea</i> ,	60	467
<i>Dendrocalamus strictus</i> ,	70	569	——— <i>daphnoides</i> ,	62	469
<i>Diospyros Lotus</i> ,	36	297,	——— <i>tetrasperma</i> ,	58	462
<i>Ehretia laevis</i> ,	42	340	——— <i>Wallichiana</i> ,	61	468
<i>Elceagnus latifolia</i> ,	46	390	<i>Salvadora oleoides</i> ,	39	316
<i>Ephedra Alte</i> ,	69	501	<i>Schlaichera trijuga</i> ,	20	105
<i>Eugenia* Jambolana</i> ,	30	233	<i>Securinea Leucopyrus</i> ,	54	456
<i>Euonymus Hamiltonianus</i> ,	16	78	<i>Shorea robusta</i> ,	9	26
<i>Ficus cordifolia</i> ,	48	416	<i>Spathodea xylocarpa</i> ,	43	349
——— <i>glomerata</i> ,	49	422	<i>Sterculia villosa</i> ,	10	32
<i>Fraxinus floribunda</i> ,	37	302	<i>Tamarix articulata</i> ,	7	22
<i>Garuga pinnata</i> ,	13	62	——— <i>dioica</i> ,	6	21
<i>Grewia oppositifolia</i> ,	12	37	——— <i>gallica</i> (var. <i>indica</i>),	5	20
<i>Holarthra antidysenterica</i> ,	40	326	<i>Tectona grandis</i> ,	44	354
<i>Ilex diplyrena</i> ,	15	76	Terminalia <i>Chebula</i> ,	29	223
<i>Juniperus excelsa</i> ,	68	538	<i>Tetranthera monopetala</i> ,	45	380
<i>Michelia Champaca</i> ,	1	3	<i>Ulmus Wallichiana</i> ,	51	432
<i>Milusa velutina</i> ,	2	C	<i>Xylosma longifolium</i> ,	4	19
<i>Morus alba</i> ,	47	407	<i>Zizybus Jujuba</i> ,	17	86

SYSTEMATIC LIST OF PLATES.

MAGNOLIACEAE.

- Tab. 1. *Michelia Champaca*, Linn.

ANONACEAE.

2. *Miliusa velutina*, Hk f. § Tit.

CAPPARIDACEAE.

3. *Capparis aphylla*, Roth.

BIXINEAE.

4. *Xylosma longifolium*, Clos.

TAMARIXACEAE.

5. *Tamarix gallica*, Linn. (var. *indica*, Roxb.)
6. „ *dioica*, Roxb.
7. „ *articulata*, Vahl.
8. *Myricaria germanica*, Desv.

DIPTELOCAEAE.

9. *Shorea robusta*, Gcartn.

STERCULIACEAE.

10. *Sterculia villosa*, Roxb.
11. *Pterospermum acerifolium*, Willd.

TILIACEAE.

12. *Grewia oppositifolia*, Roxb.

BURSERACEAE.

13. *Garuga pinnata*, Roxb.

MELIACEAE.

14. *Cedrela Toona*, Roxb.

ILICINEAE.

15. *Ilex dipyrrena*, Wall

CELASTRACEAE.

15. *Euonymus Hamiltonianus*, Wall

ELAEAGNACEAE.

- Tab. 17. *Zizyphus Jujuba*, Lam.

18. *Ehmannia purpurea*, Edyemnih.

SAPINDACEAE.

19. *Esculus indica*, Colebrooke.
20. *Schleichera trijuga*, Willd.
21. *Acer caesium*, Wall.

ANACARDIACEAE.

22. *Pistacia integerrima*, L. L. Stmrt.

LEGUMINOSAE.

23. *Ougeinia dalbergioides*, Benth.
24. *Dalbergia Sissoo*, Roxb.
25. *Prosopis spicigera*, Linn.
26. *Albizzia procera*, Benth.
27. *Acacia leucophloea*, Willd.

HAMAMELIDACEAE.

28. *Parrotia Jacquemontiana*, Decnim.

COMBRETACEAE.

29. *Terminalia Chebula*, Retzhia.

MYRTACEAE.

30. *Eugenia Jambolana*, Lam.

SAMYDACEAE.

31. *Casearia tomentosa*, Roxb.

COENACEAE.

32. *Comus macrophylla*, Wall.

EUBIACEAE.

33. *Adina cordifolia*, Benth. § HI:

AIYERINACEAE.

34. *Leptonia buxifolia*, A. DC.

SYSTEMATIC LIST OF PLATES— *Continued.*

SAPOTACEÆ.

Tab. 35. *Bassia butyracea*, *Eoxb.*

EBENACEÆ.

36. *Diospyros Lotus*, *Linn.*

OLEIOTLE.

37. *Fraxinus floribunda*, *Wall.*

38. *Olea cuspidata*, *Wall.*

SALVADORACEÆ.

39. *Ralvadora oleoides*, *Decaism.*

APOCYNEÆ.

40. *Holarrhena antidysenterica*, *Wall.*

BORAGINEÆ.

41. *Cordia Macleodii*, *Hk. f. fy Th.*

42. *Ehretia lsevis*, *Roxb.*

BIGNONIACEÆ.

43. *Spathodea xylocarpa*, *T. And.*

VERBENACEÆ.

44. *Tectona grandis*, *Linn. fil.*

LAURINEÆ.

45. *Tetranthera monopetala*, *Roxb.*

ELIAGNEÆ.

46. *Elteagnus latifolia*, *Linn.*

URTICACEÆ.

47. *Morus alba*, *Linn.*

48. *Ficus cordifolia*, *Roxb.*

49. „ *glomerata*, *Willd.*

URTICACEÆ—*continued.*

Tab. 50. *Celtis australis*, *Linn.*

51. *Ulmus Wallichiana*, *Planch.*

EUPHORBIACEÆ.

52. *Phyllanthus Emblica*, *Linn.*

53. *Putranjiva Roxburghii*, *Wall.*

54. *Securinega Leucopyrus*, *Müll. Arg.*

55. *Briedelia retusa*, *Sprengel.*

BETULACEÆ.

56. *Betula acuminata*, *Wall.*

57. *Alnus nitida*, *Endl.*

SALICINEÆ.

58. *Salix tetrasperma*, *Roxb.*

59. „ *babylonica*, *Linn.*

60. „ *Caprea*, *Linn.*

61. „ *Wallichiana*, *And.*

62. „ *daphnoides*, *Vill.*

63. *Populus euphratica*, *Oliv.*

CUPULIFERÆ.

64. *Quercus semecarpifolia*, *Sm.*

65. „ *annulata*, *Sm.*

66. *Carpinus faginea*, *Lindl.*

CONIFERS.

67. *Pinus Gerardiana*, *Wall.*

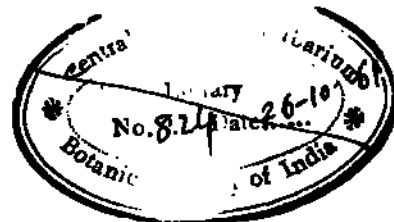
68. *Juniperus excelsa*, *Bieb.*

GNETACEÆ.

69. *Ephedra Alte*, *C. A. Meyer.*

GRAMINEÆ.

70. *Dendrocalamus strictus*, *Nees.*





W.H.F. Sch. del. et lith.

H*. Il-HinJim-I. imp.

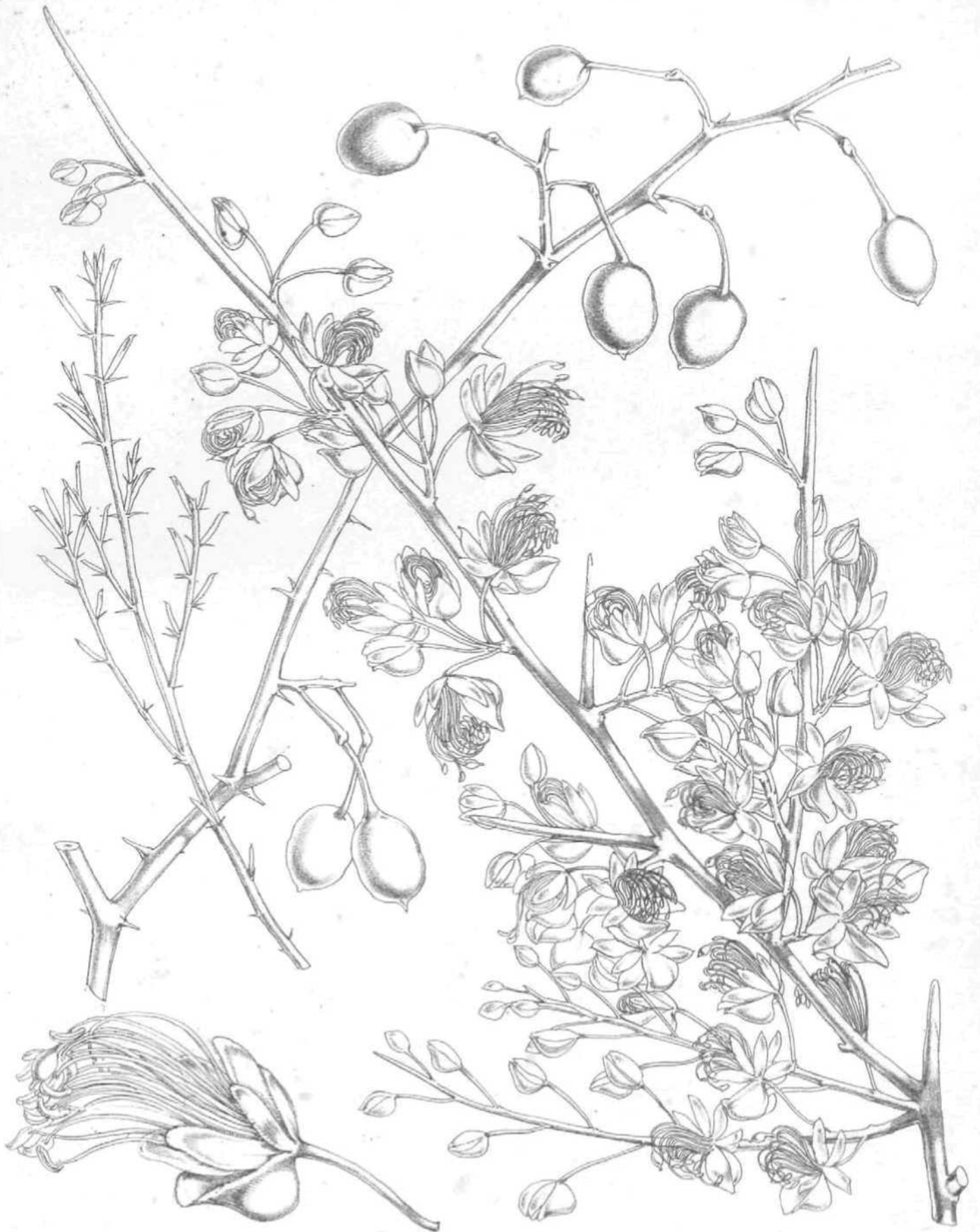
Michelia Champaca. *Linna*



W.H.Pitch. del. et lith.

Jvfr N HanhiH. imp.

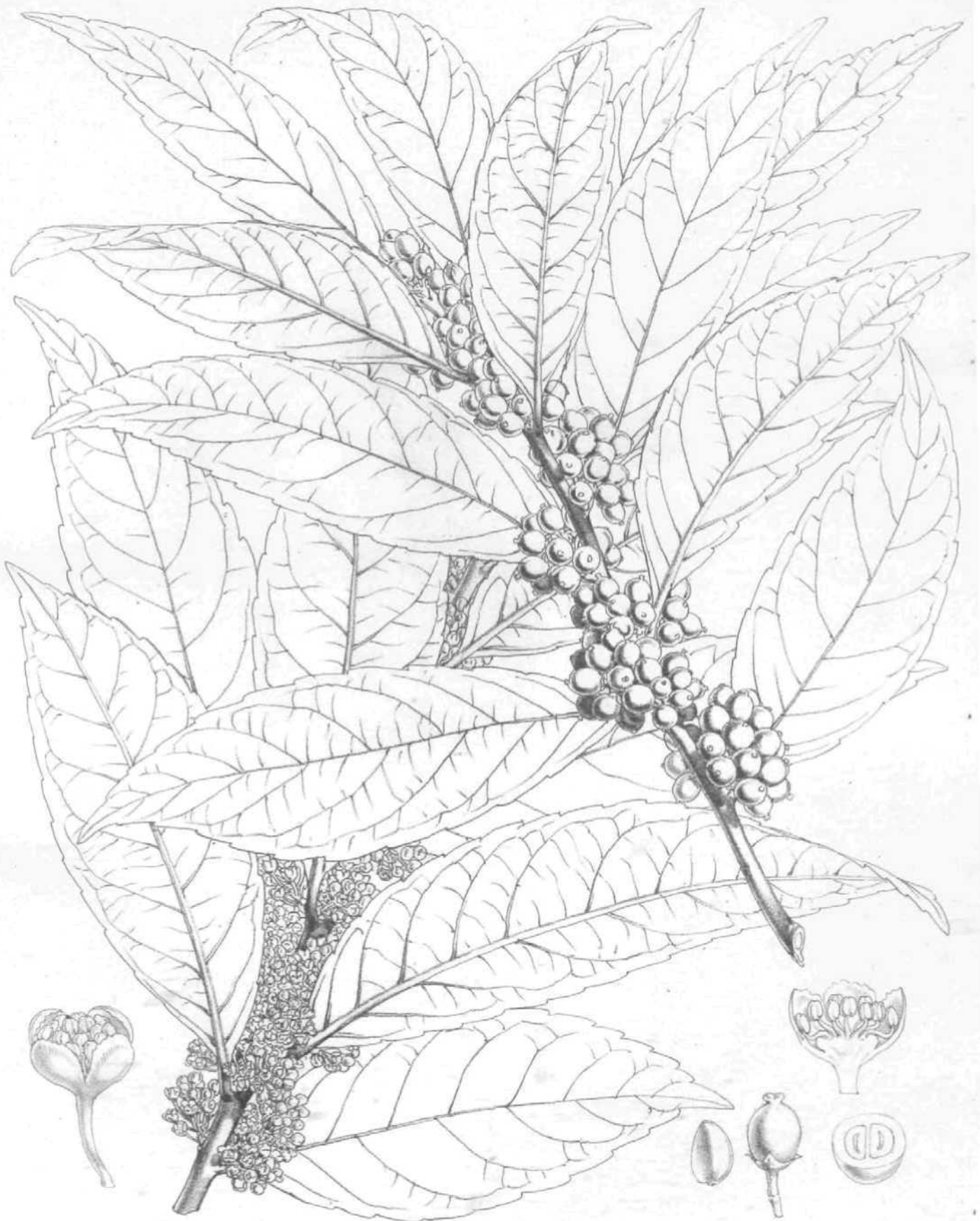
• *Milusa veluUna*, *H.f. & 71.*



W.H. Fish del. et lith.

M. & N. Hasart. imp.

' Cap par is aphylla, *Both.*



W.H. Fitch del etlrrt

M & N. Hanhart. T.M.V.

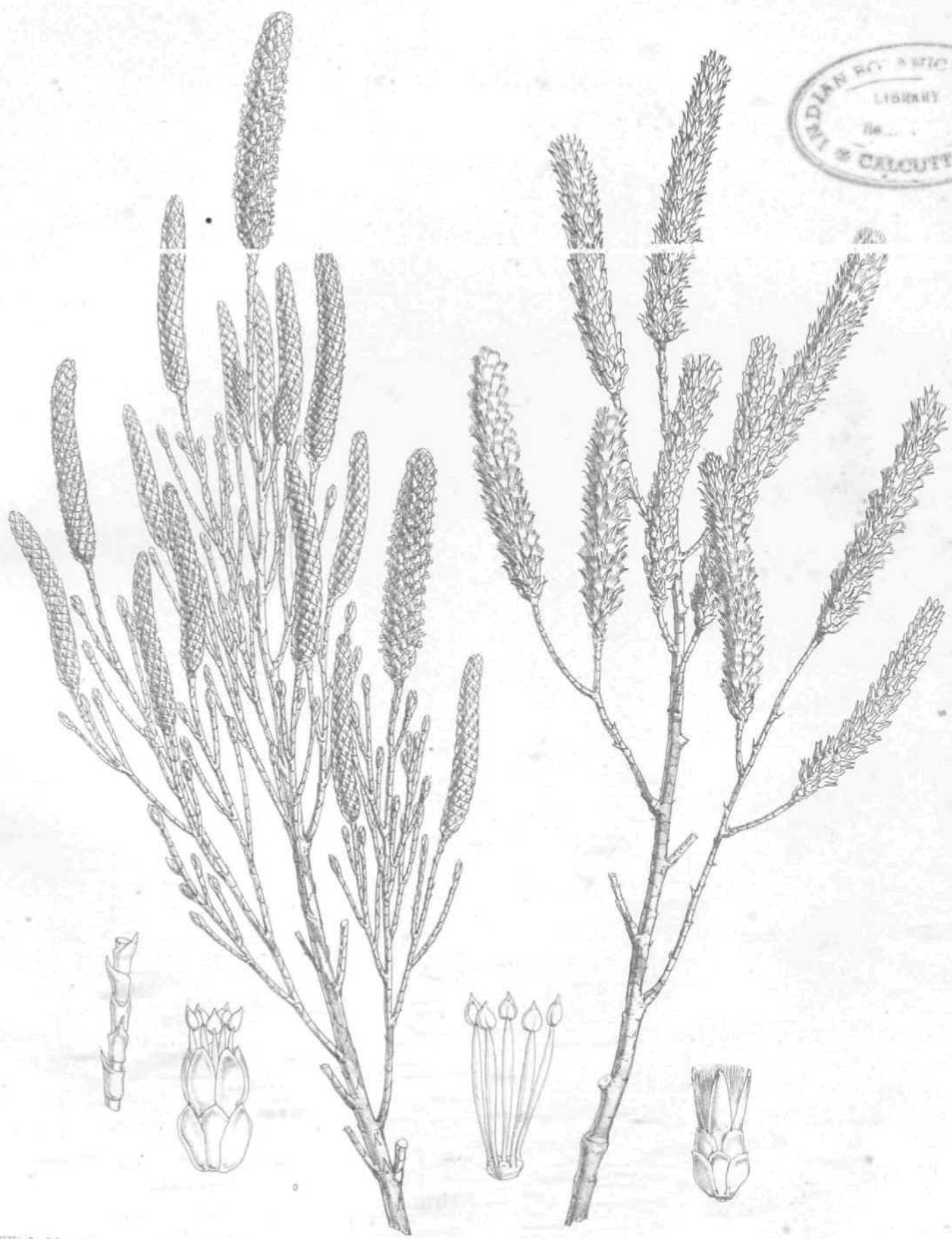
Xylosma longifolium, C.Jos.



W.H. Fitch. del et lith.

H. & H. Hanhart. imp.

Tamarix g-aJ J1 c a, Ziff. (ya-' mdica. * Roxb)



W.H. Fitch del. et lith.

M. & N. Hanhart imp.

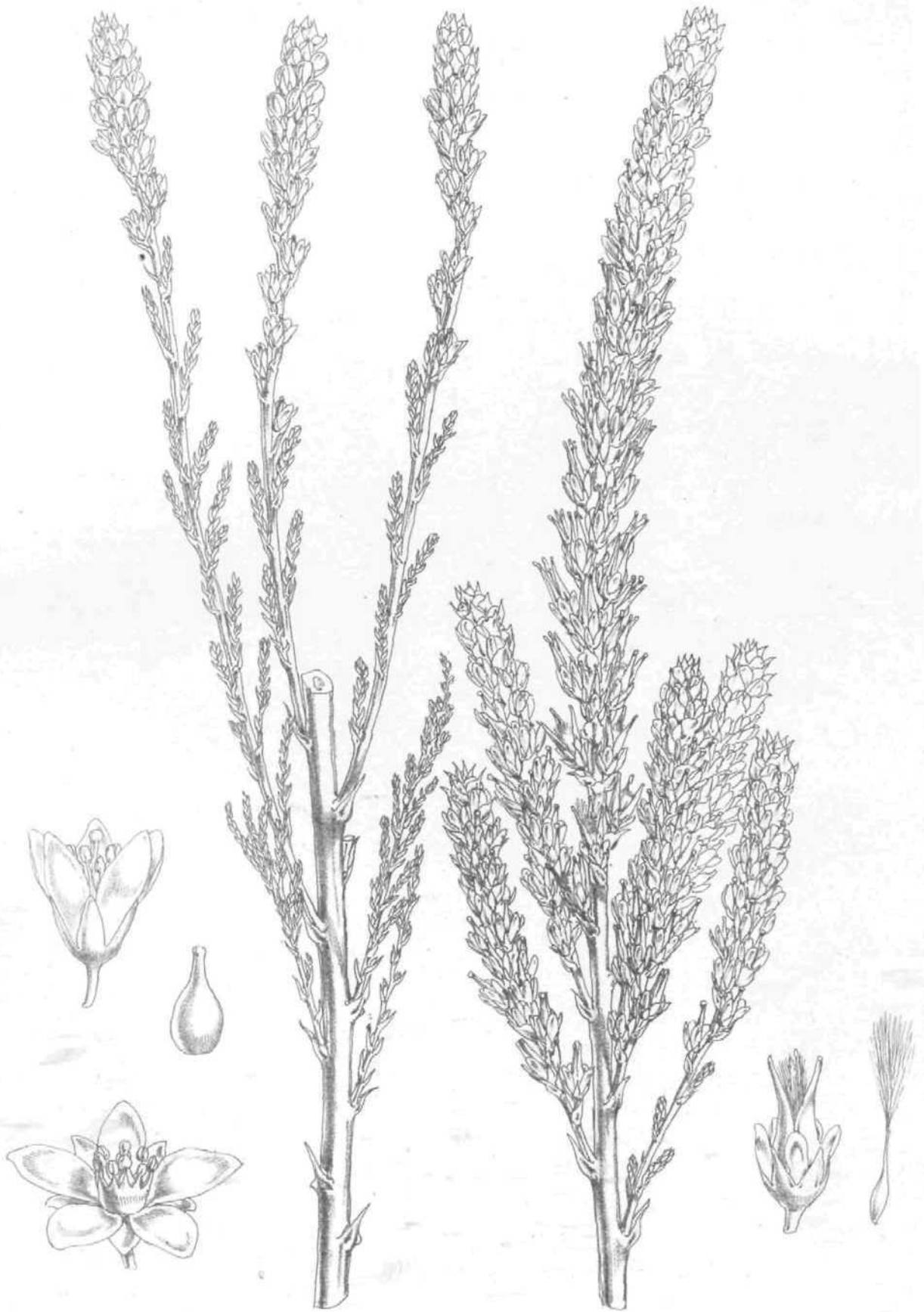
Tamox dioica, .Roxb.



WH fith. ill et III

I!* KHaniurl. iv<

TarQELDX articulata 1.a. Vahl



RIWMKM

W & T Harhart imp.

' Myrica. germanica, Desv.



• « -v

W.H.F. -3.de) el Jni

M & H. .-jusart. imp

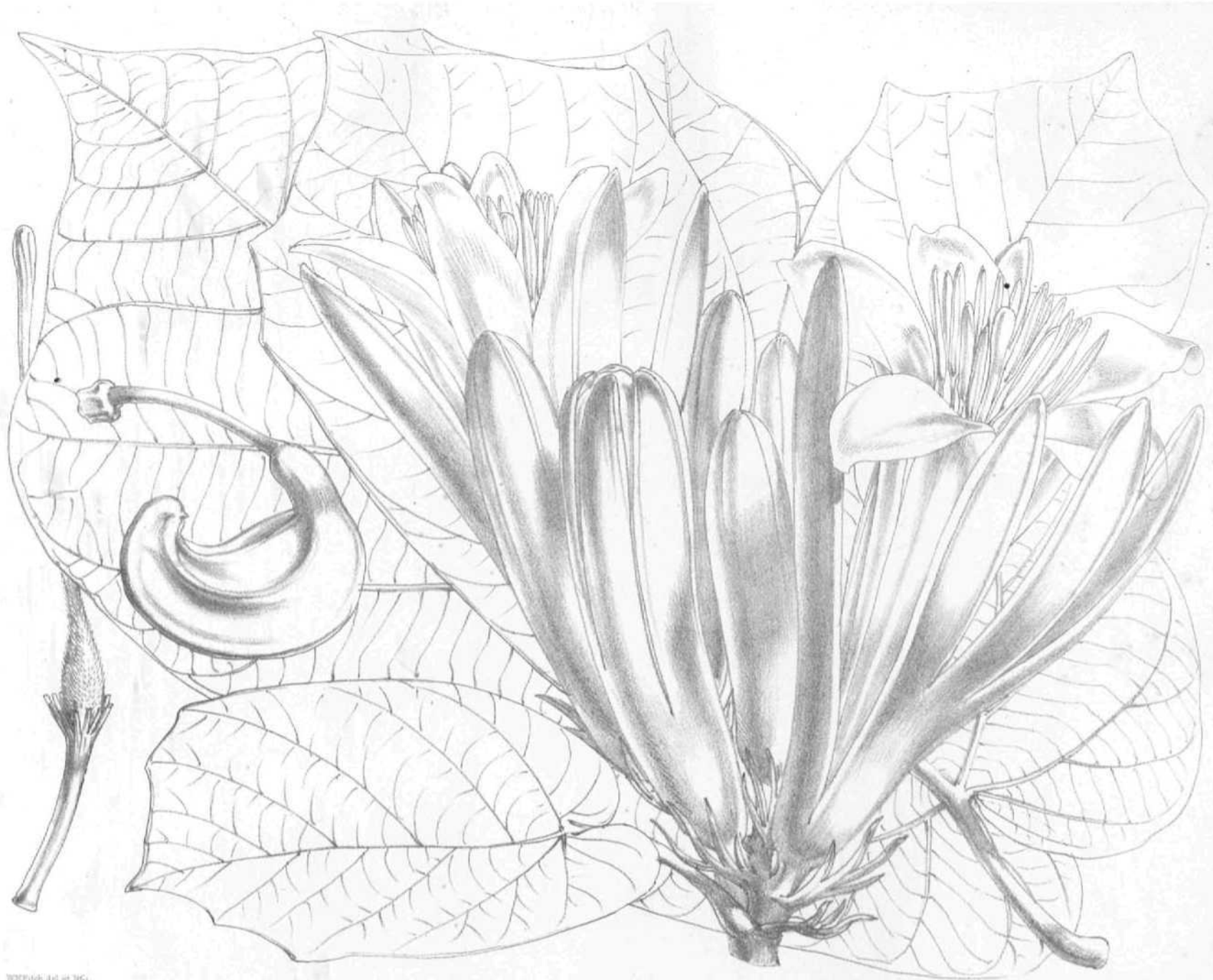
'Shorea robusta, G&rl??



W.H. Fitch, del. et lith.

M. & N. Hanhart, imp.

Sterculia villosa, Roxb.



WOLFFENBUTTEL 1846

MARTIN

Pterospermum acerifolium, Willd.



Grewia oppositifolia, Roxb.

M. & S. Herbert sp.



W. & A. N. H. 1840.

M. & N. H. 1840.

, *Garuga pinnata*, *Roxb.*



VTH Pitch Mulct

M & N Hanhart. uuf

Gedrela To on a. Roxb



W H Fitch. del. et lith.

144 N. Harbort. imp.

Ilex dipyrrena, Wall.



W.B. Fisch. del. et lith.

M & N. Hanhart. imp.

Evonymus hamiltonianus. Wall.



V. Ditch, del. et. scul.

2661/Hanhart sculp.

'Zizyphus Jujuba, Lam.'



W. H. P. & Co. Lith.

M. & N. S. & Co. Imp.

Rhamnus purpureus. Edgeworth.



W.H.Fitch. del. et lith.

M & N Hanhart imp.

Aesculus indica Colebrooke



Witzsch del. et sculp.

H. V. Harlaer imp.

Schleicheria trijuga, Willd



W. R. F. v. d. H. et al.

Acer caesium, Wall.

M. & H. Hart imp.



X.H. Fitch del. et lith.

U. z. N. Kin art. imp.

Pistacia integerrima, J.L. Stewart.



W.H. Peck del et lit

M. & H. Hankart imp

Ougeinia dalbergioides; **^ s z t h**



W.P. Smith del. et lith.

M. & M. Barber, imp.

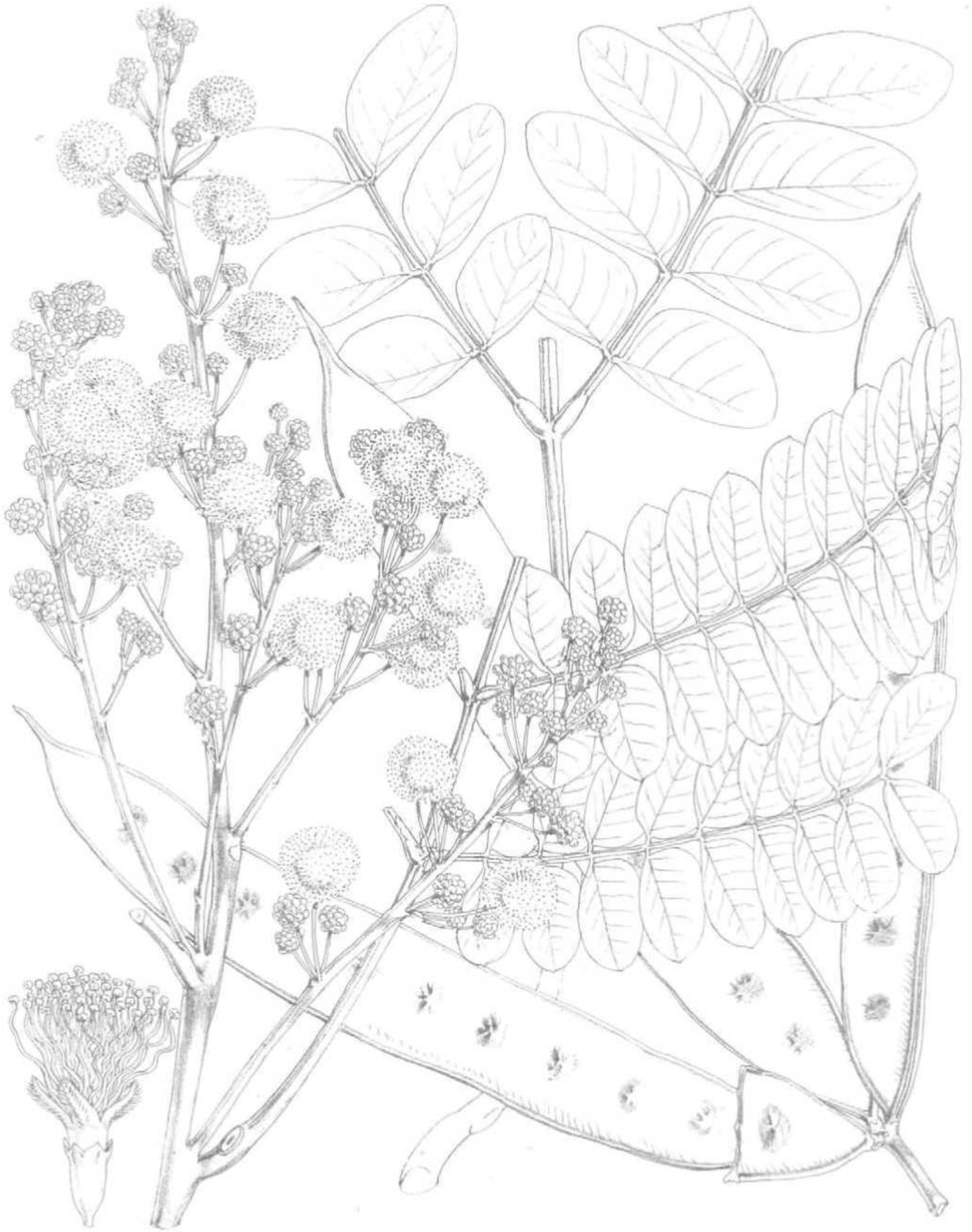
Balberg-ia Sissoo, *Roob*



W.H. Peck del. et lith.

MANNING sculp.

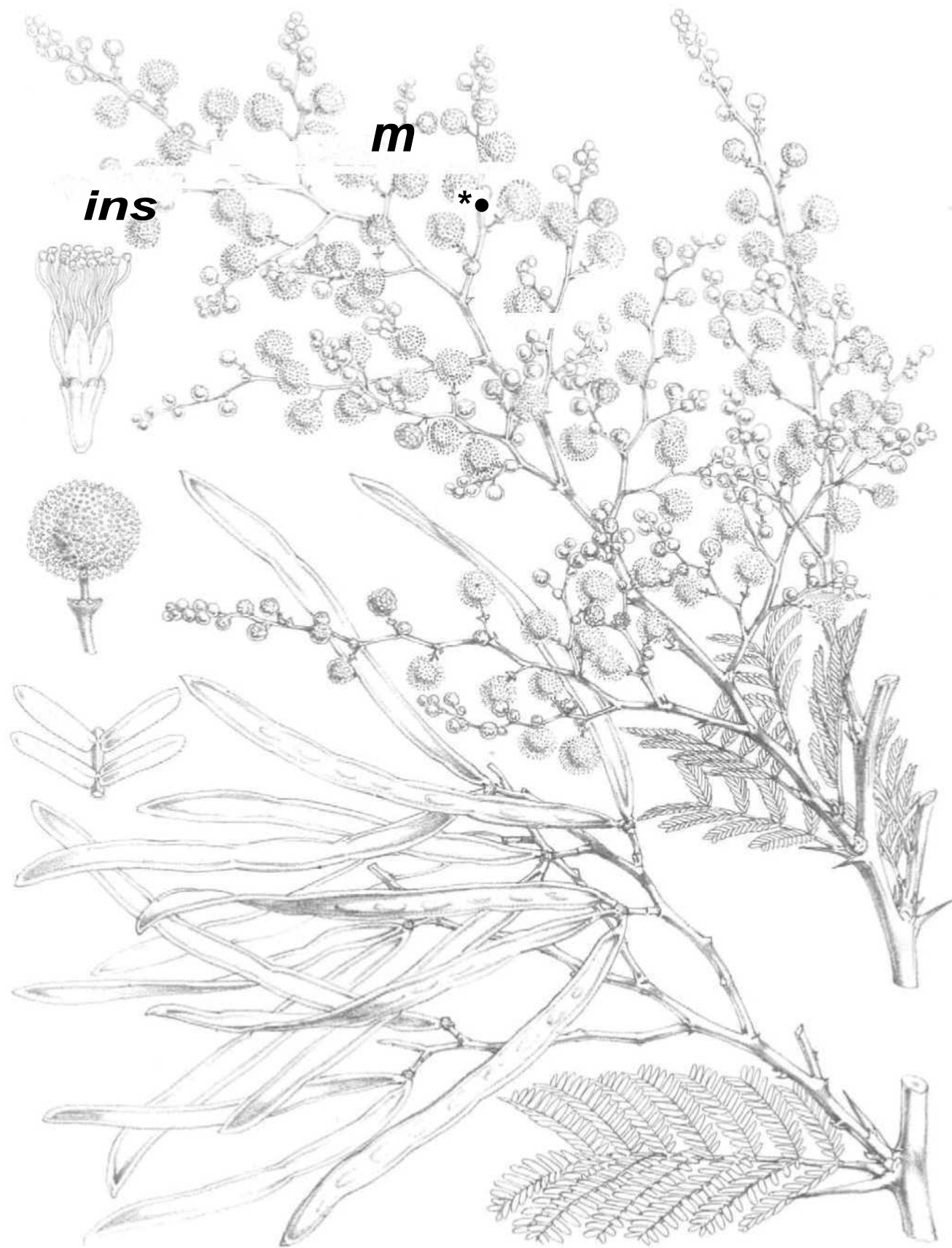
Prosopis spicigera. *Lim.*



WILLIAM ALLEN

M. R. HANSEN-IMP

Albizzia procera Benth.



ins

m

*●

Willd. del. et. scul.

MANN. scul. imp.

Acacia leucophloea, Willd.



whi-k • ha⁸ . et . lth.

M & N Hanb. et. imp.

Parrotia fasciculata (L.) Decaisne.



W.H. Pritch del et lith

M.S. Nandan imp

Terminalia Chebula, Retzius.



W.H. Fitch del. et sculp.

M. & C. Cochran sculp.

Eugenia Jimibolana, Lam.



W. & A. N. S. P.

W. & A. N. S. P.

*Casearia tomentosa*¹, *Roxb.*



W. & A. P. Smith del et sculp.

M. & H. Baughart sculp.

Cornus macrophylla, Wall.



Adina cordifolia, *Benth. & Hook.*



W.H.F. Jd cl 18

H. N. Harbort 1897

Rep. I [L] axifolia. A. DC.



H. Fitch del. et lith.

M. & H. Harshart imp.

Bassia butyracea, Roxb.



Walters del. & sculp.

M. A. N. H. B. A. C. sculp.

Diospyros Lotus, Linn.



W. Fish, del. et lith.

J. A. G. Rehnert, imp.

Fraxinus floribunda, Wall.



W.H.Pack. 4.1 et 4.2

et C.H. Schubert imp.

Olea cuspidata, Wall.



W.H. Peck del. et lith.

M. & N. Hanhart imp.

Saivadora oleoides, JD & Caj'sne.

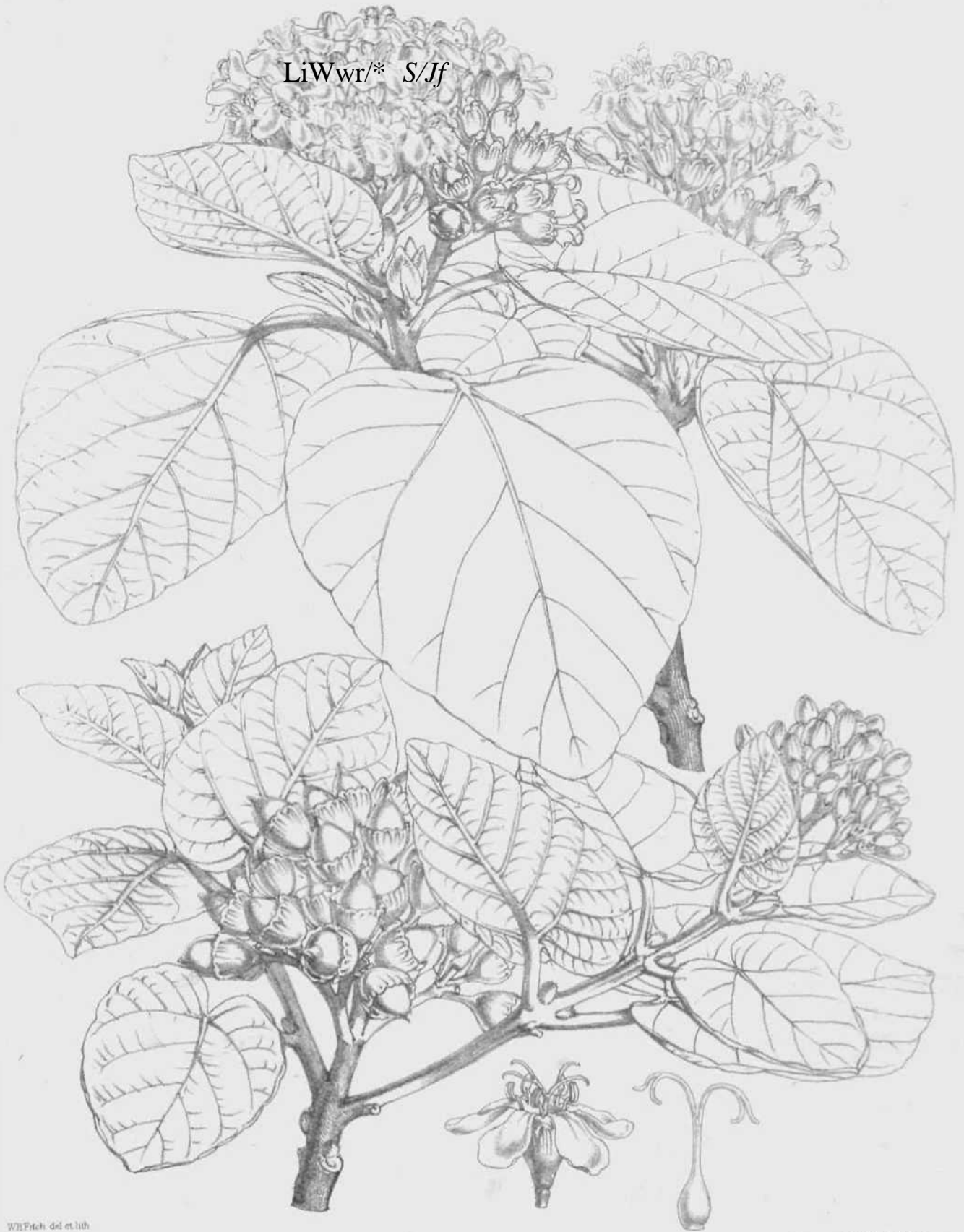


W. H. P. Sch. del. et lith.

M. X. K. J. a. n. l. t. c. n. 1860.

Holarrheina astitidysenterica, Wall

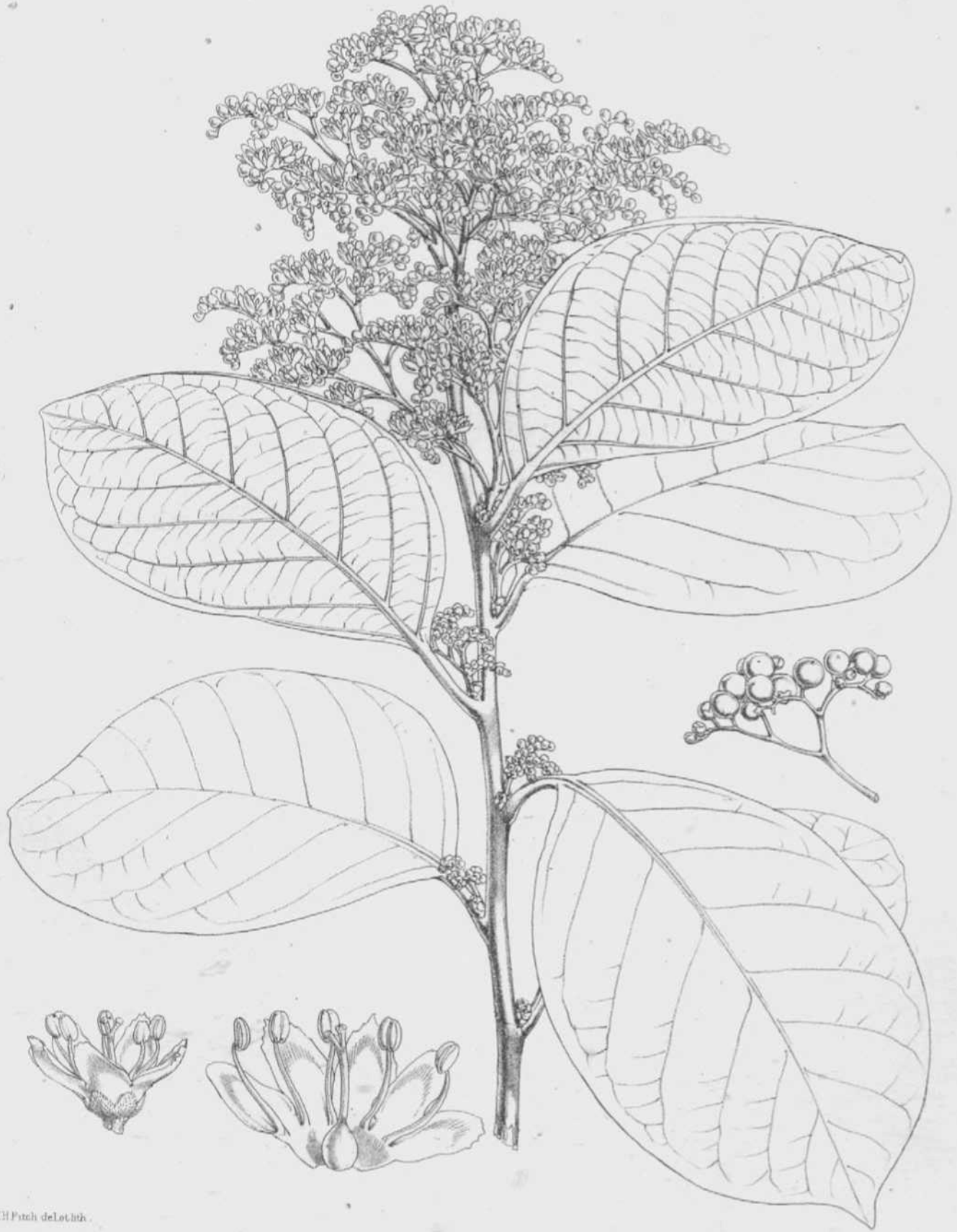
LiWwr/* S/Jf



W.H. Pritch. del et lith

W. & A. G. S. & Co. London

Cordia Mfilcleodn, H.f. gZ?



W.H. Panch del. Lith.

Eretia laevis. Roa:h.

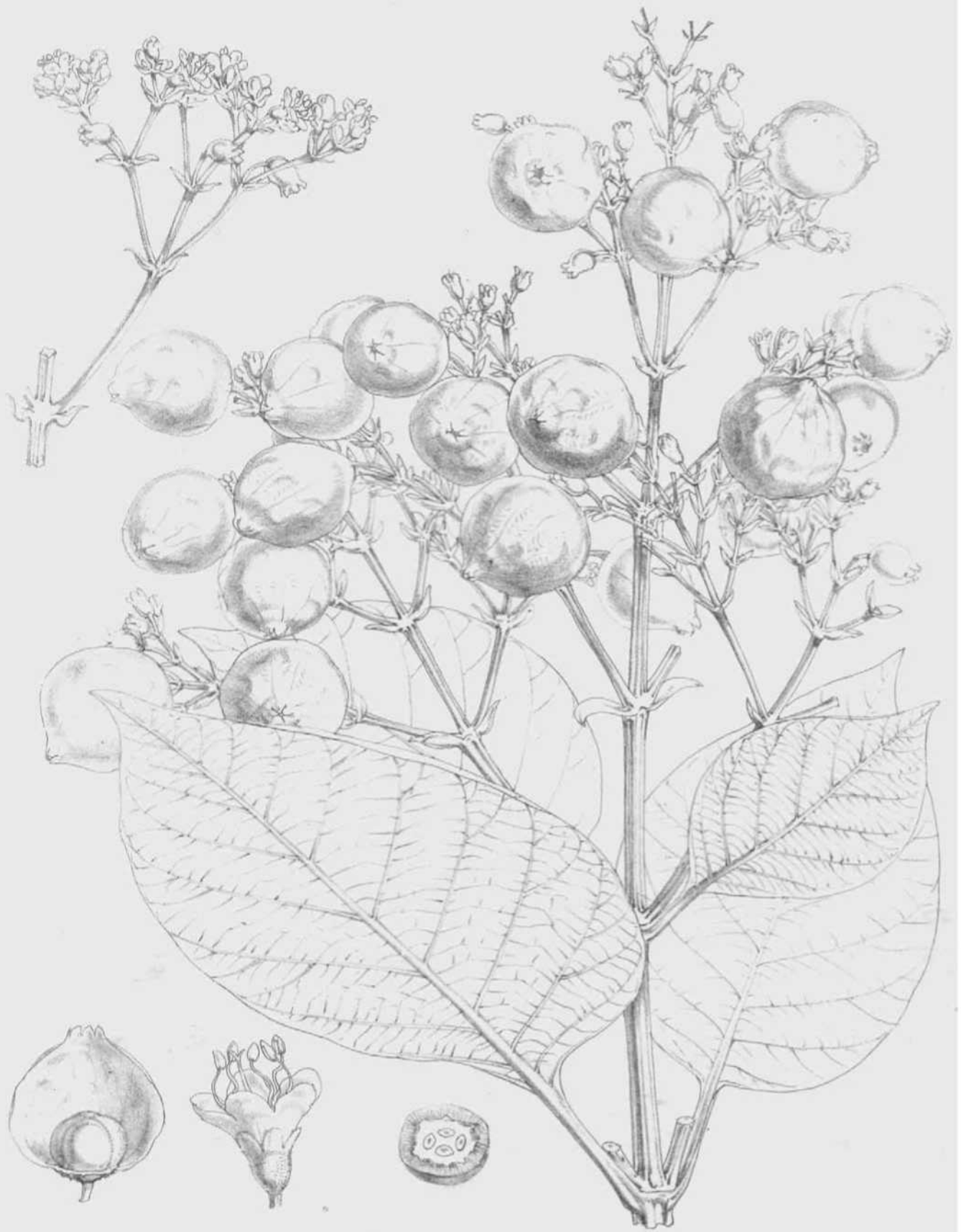
U1B runtua, imp



W. H. Fitch. Del. et Lith.

M & N. Harhart. imp.

Spathoclea xilocarpa, T. And.



W.H. Fitch del. et lith.

M & N 5<ih*r.l.inp.

Tectona grandis, *Lj}w. fil*



W.H.Pf. del. et lith.

Hill. Hort. bot. imp.

Tetranthera monopetala, Roxb.



W.H.Pitch id A.O.H.

M.A.H. Hardison, imp.

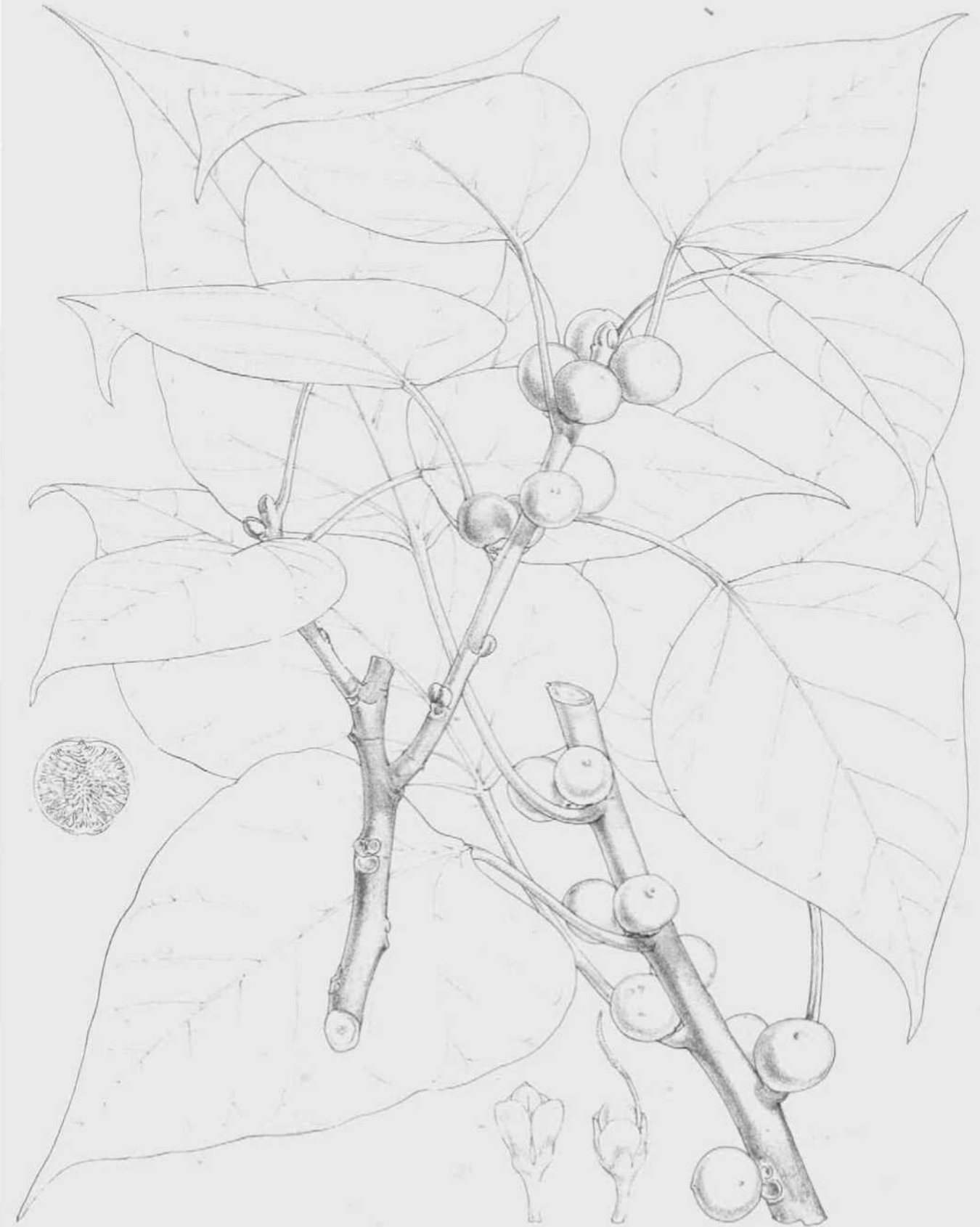
Elaeagnus latifolia, Lmn.



WH Fitch del. et. lith.

M4N Hjuirt, up

Morus alba, Linn.



vt II Filch in. et lith.

M. H. Bull. sc. imp.

Ficus cordifolia, Roxb.



W.H. Fitch del et lith.

M & N. Harhart. imp.

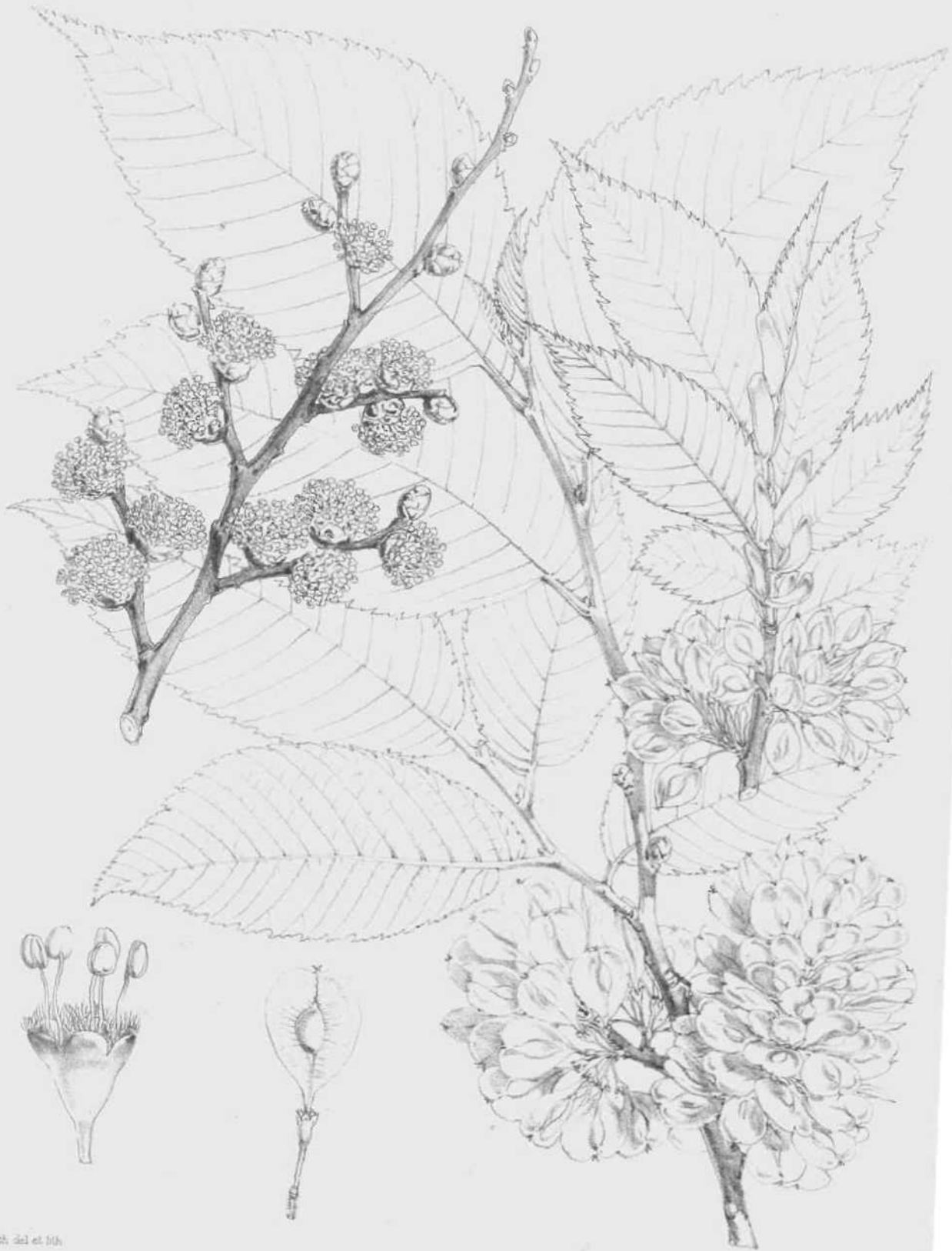
Ficus glomerata, *WdU*



W.H. Fitch, del. et lith.

M. & N. Hanhart, sculp.

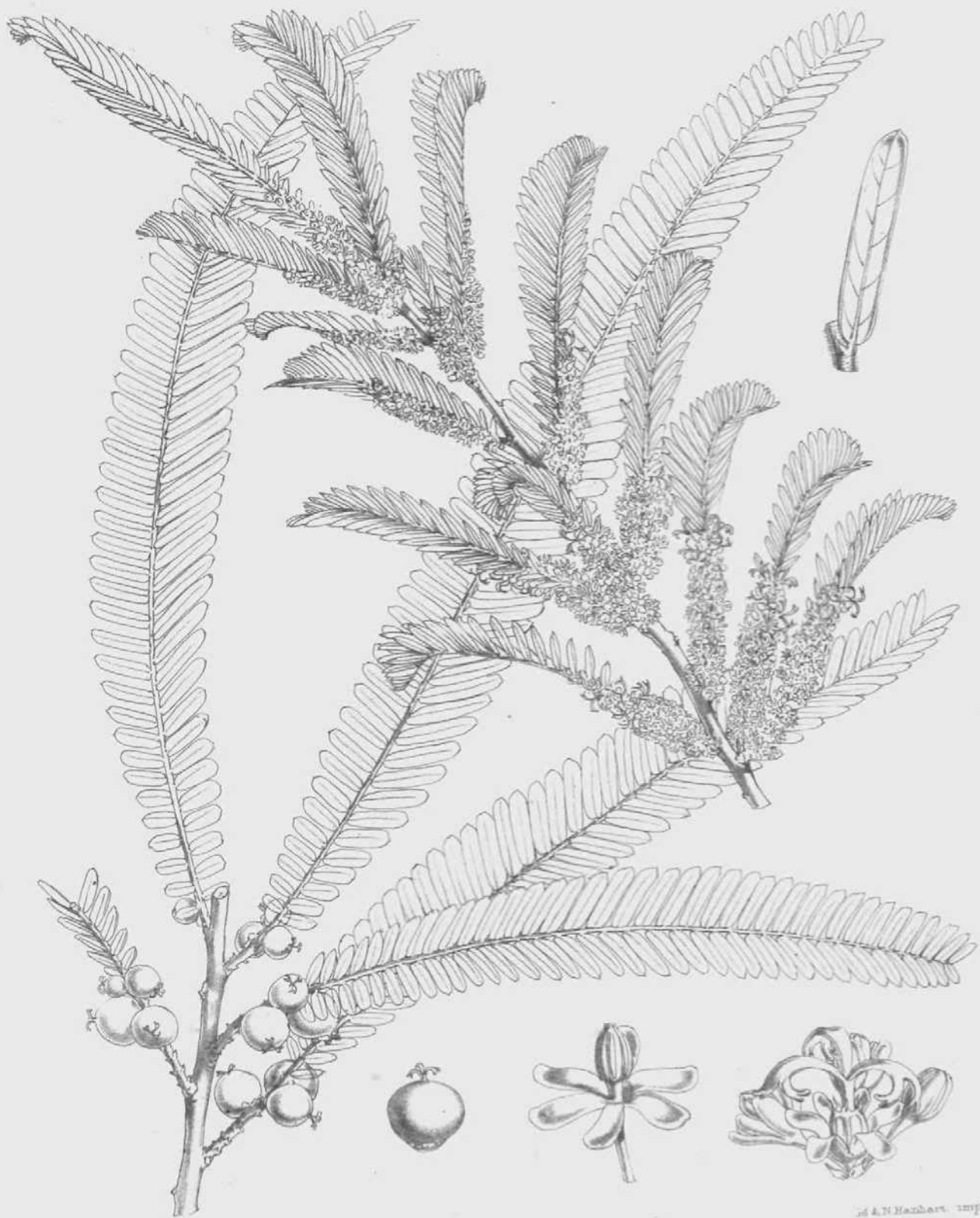
Celtia australis B. Linn.



W. H. Fitch del et lith

Ulmus ^ *alpicornis*, *Planch*

... ..



W.H.F. sh w « w

Ph/Uanthus Embhca. -UBD.

of A. N. Hancock. imp.

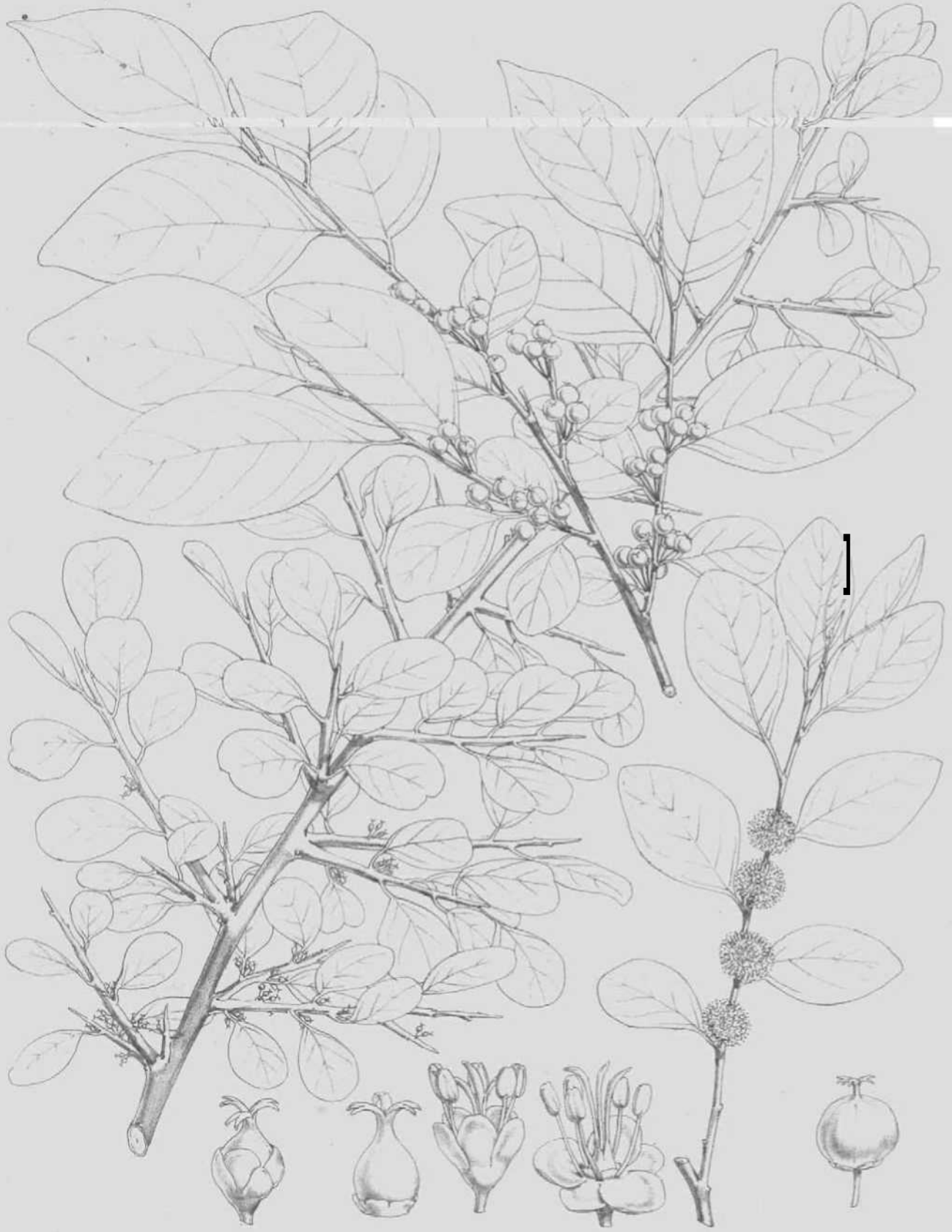
.Lin.



K.H.J. Loh J>1<1111

M. & H. Borchert. imp.

Putr-cuajiva *Hoxburghii*, Wall.



WHL-ittii dnl rn hii

M & N Hanhart. imp

Securinega leucopyrva. Mull Arg.:



W.H.Fitch del et lith.

Mi.KHo.Tih. scilicet imp.

Braedelia retusa, Sprengel!



W.H.Fitch del. cl. Iliti

M & N Hanhart imp.

B etui a a cumin at a. WaJJ.

f •



T. R. R. ch. del. et lith.

M. A. N. Hanhart sculp.

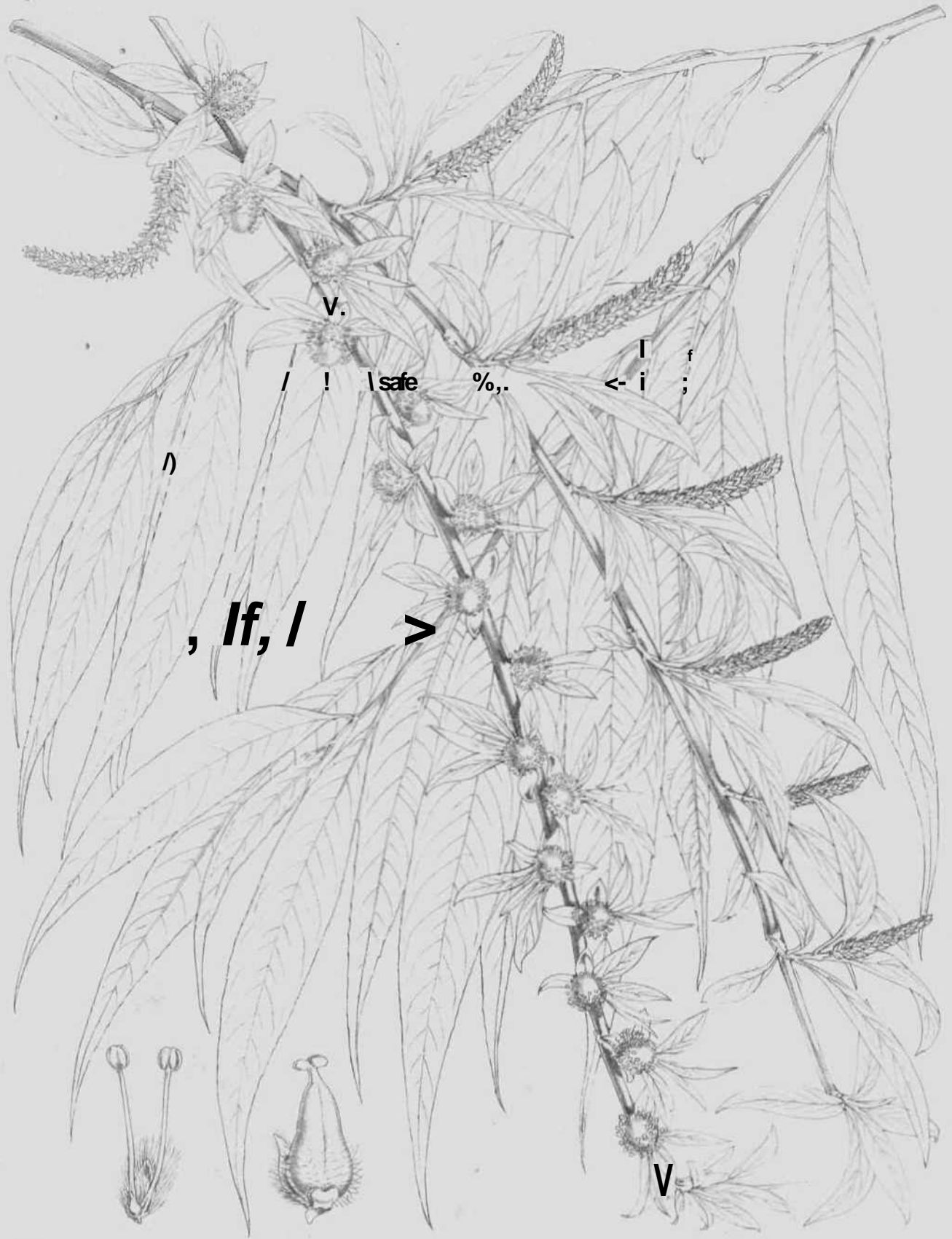
Alnus nitida, Endl.



W.H. Peck, del. in lith.

M & R. Hancock. sculp.

Salix tetrasperma, Roxb.



V.
/ ! \ safe %,, < i ;

)

, lf, l

>

V

W.H. Fitch del. tit.

M & N. Hanhart trap

Salix babylonica, Linn.



WH Peck del. et lith.

M & N Hancock imp.

Sahx Caprea, Lwn.

ua.



wnr.u.

Salix Wallichiana, And.

•AZA KH



W.H.Fisch. del. et lit.

M. & N. Hanhart. imp.

Salix daphnoides, VIII.



W.H. Fitch, del. - J. J. J.

M. & N. S. B. - J. J. J.

Populus euphratica, O.Jr.'v



W.H.Fitch. del. et lith.

M & J. Harhart imp.

Quercus semecarpifolia. Sm.



W. H. P. del et lit.

M. A. N. P. 'tohi-t imp

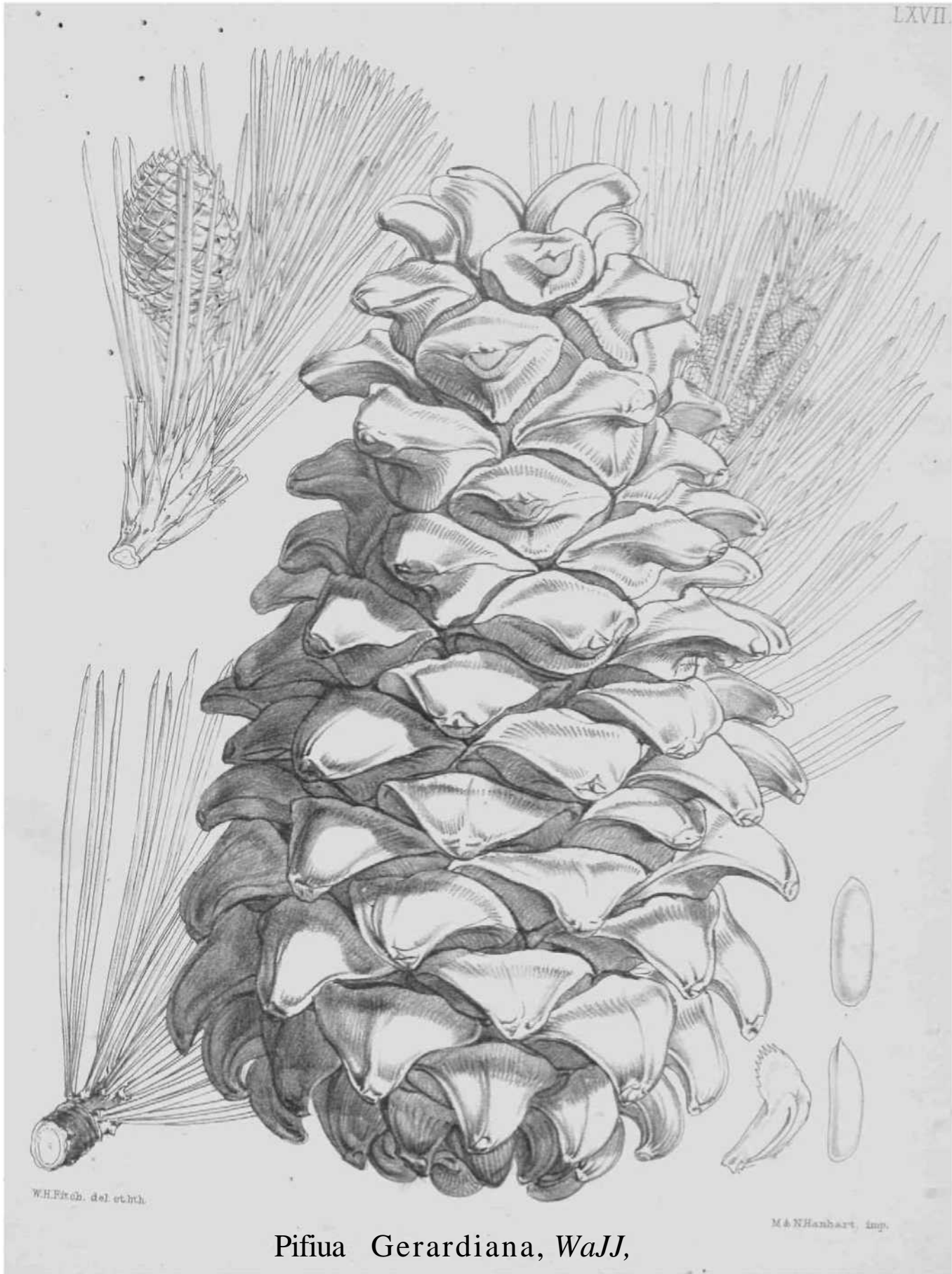
Quercus aiinu.idLta, Sm:



W.H. Fitch, del. ● J.H.

M & N Harber, imp.

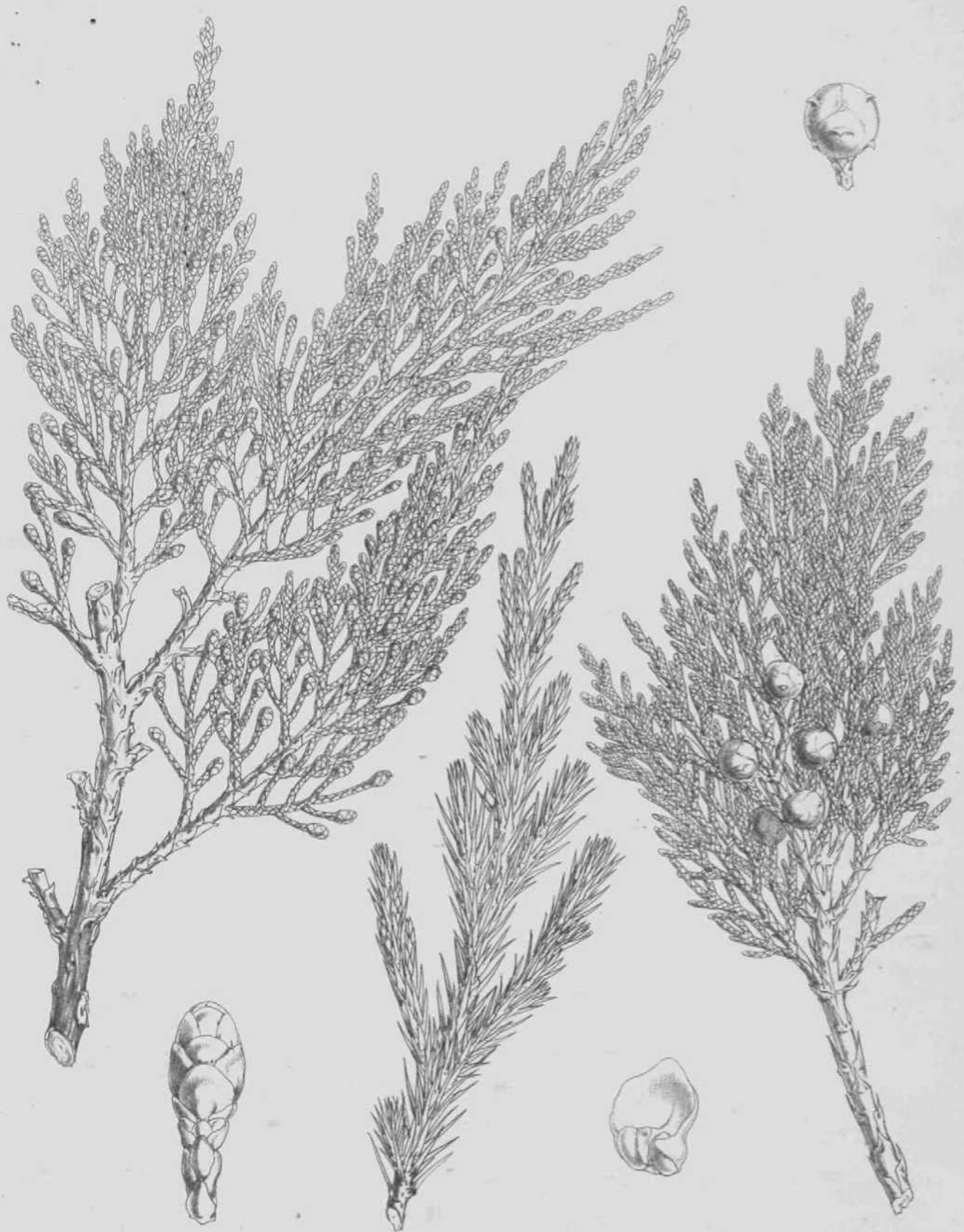
Carpinus faginea, Ljndl.



W.H. Fitch. del. et lith.

M & N Hanhart, imp.

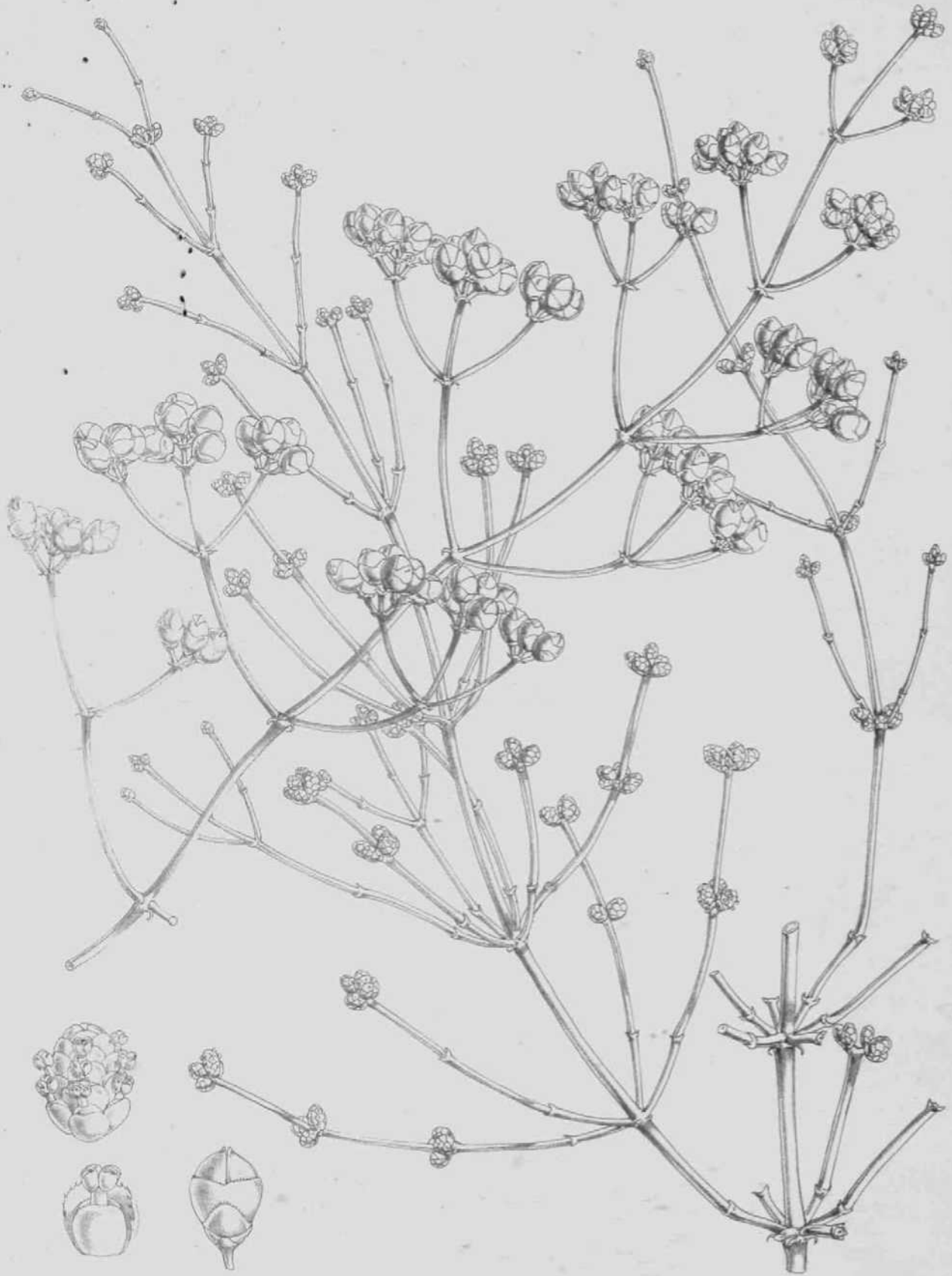
Pifua Gerardiana, WaJJ,



W.M.F. del. et lith.

M. & N. Hanhart. sculp.

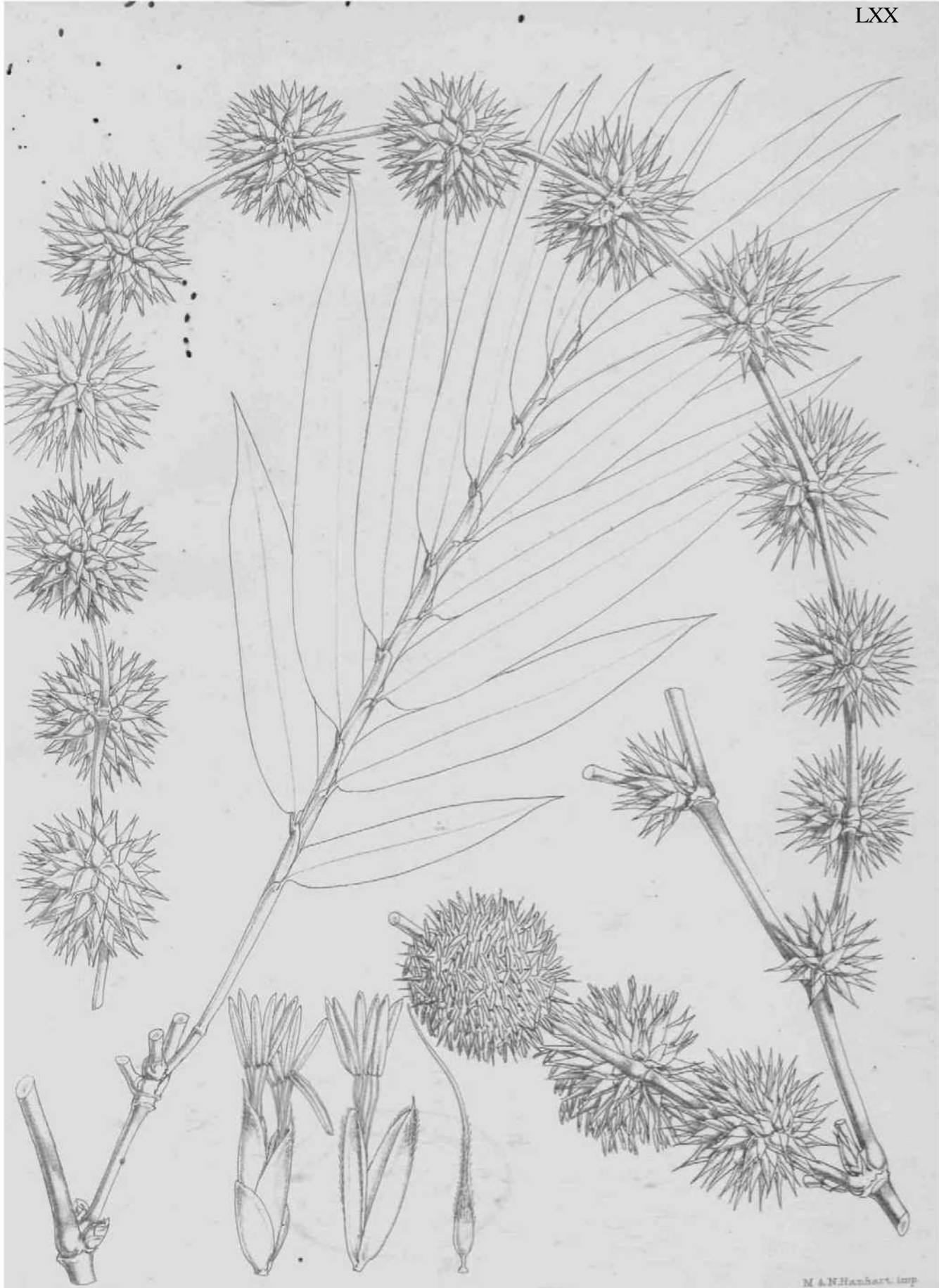
Juniperus excelsa, Bieb.



W.H. Fish del. et. sculp.

M. & N. Barber. sculp.

Ephedra: Ira Alta, CA Meyer



W.H.Psch del. -i lit*

M & N Hanhart imp

Dendrocaamus strictus, Nees.